

FIG. 35. WIRING DIAGRAM FOR 1939-40 MODEL 100 PANTHERS  
*(H. Miller & Co., Ltd.)*

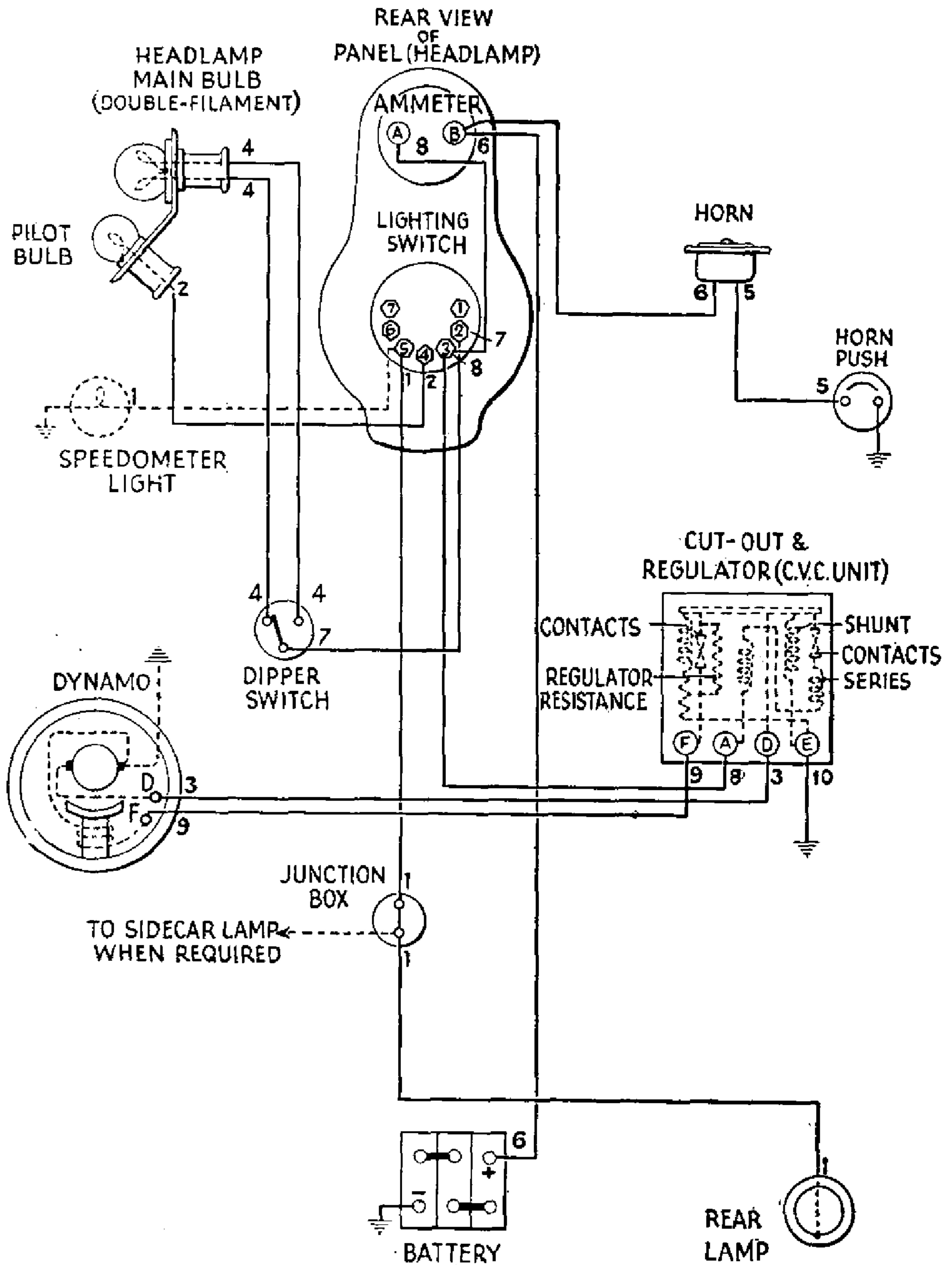


FIG. 36. WIRING DIAGRAM (NEGATIVE EARTH)  
FOR 1945-51 MODEL 100 PANTHERS

(Joseph Lucas, Ltd.)

The numbers indicate the colours of the wiring sleeves.

KEY TO SLEEVING COLOURS

- |                       |                      |
|-----------------------|----------------------|
| 1. Red.               | 6. Yellow and black. |
| 2. Red and black.     | 7. Blue and white.   |
| 3. Yellow.            | 8. White and purple. |
| 4. Blue.              | 9. Green and black.  |
| 5. Yellow and purple. | 10. Black.           |

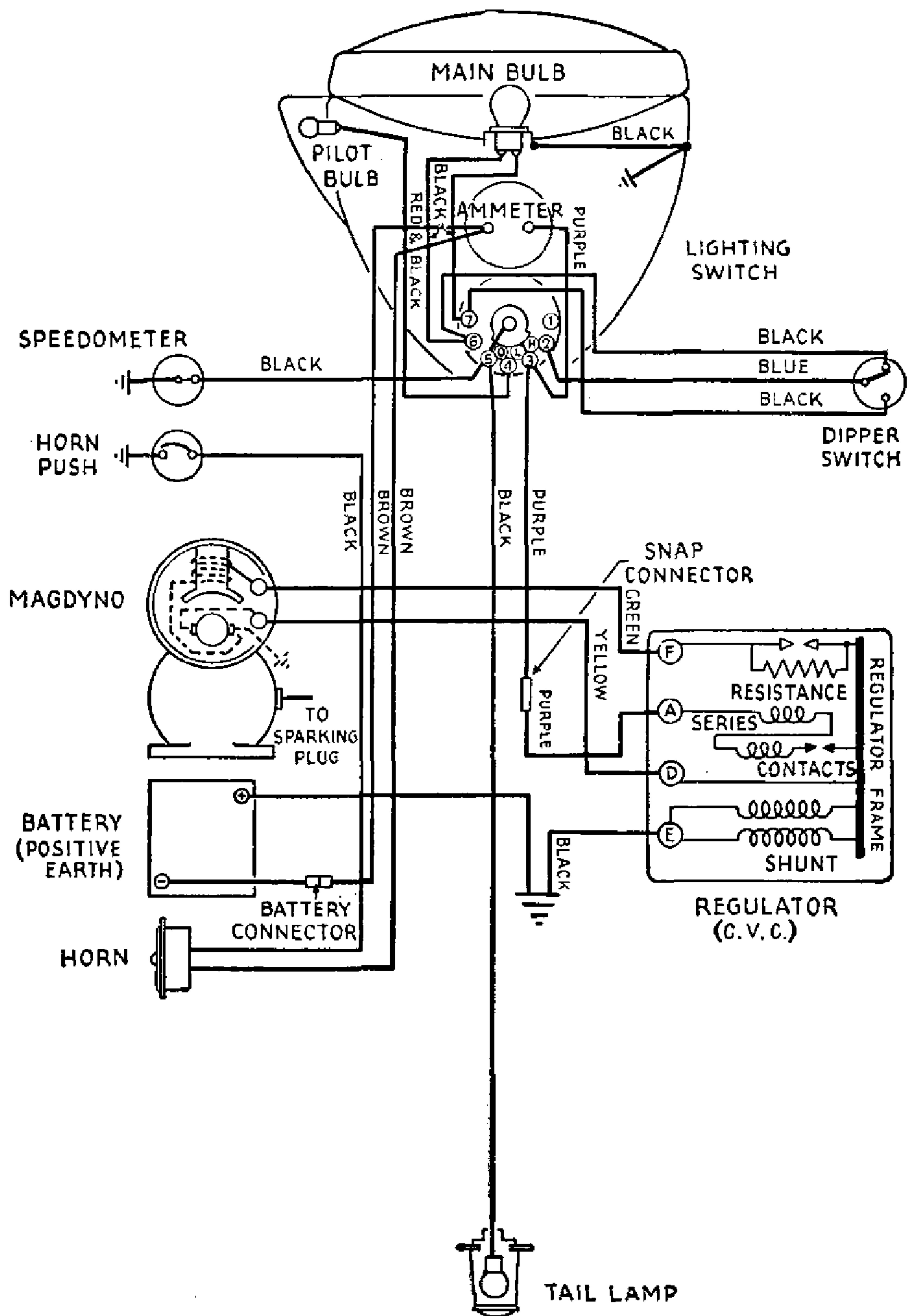
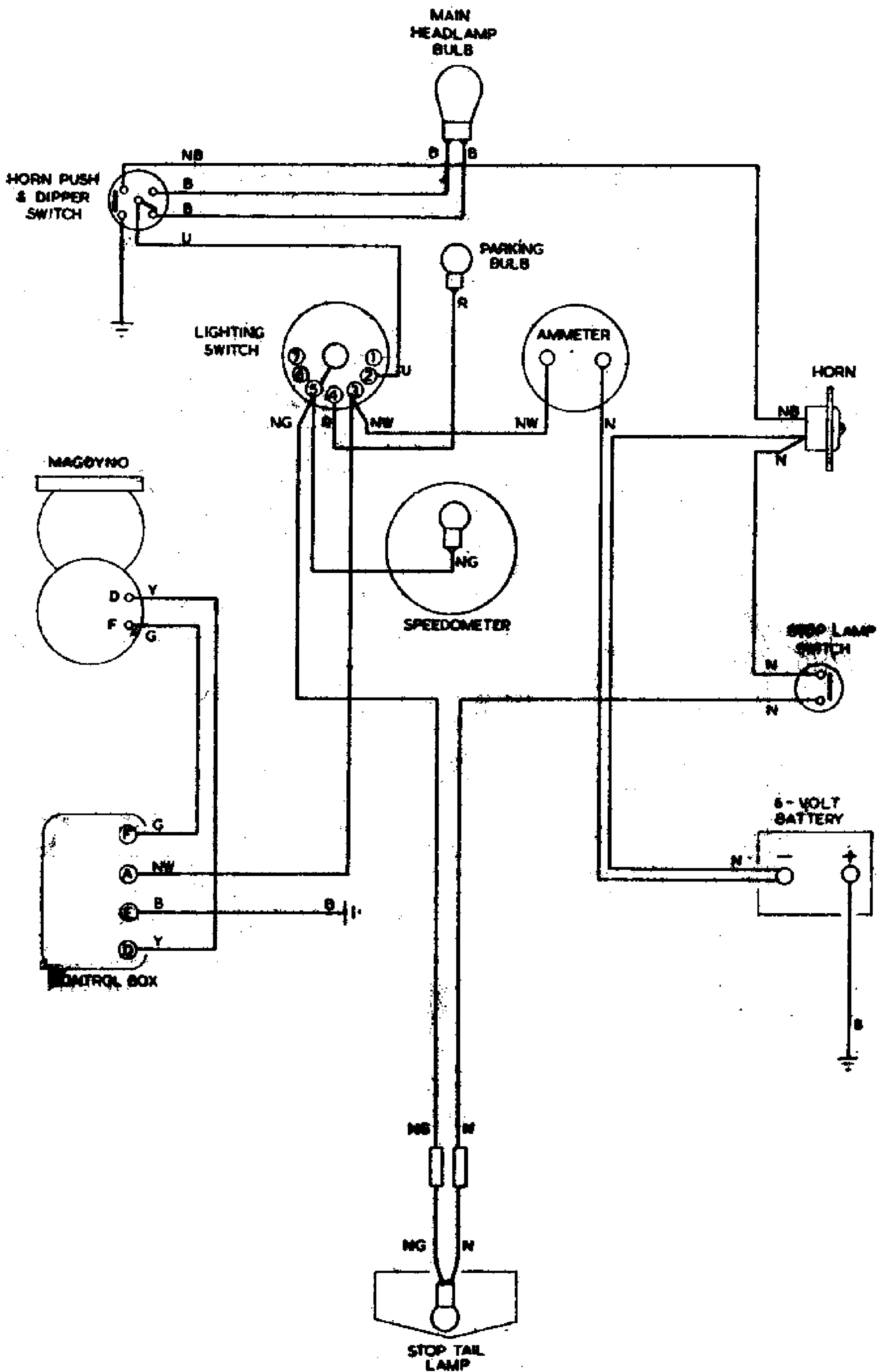


FIG. 37. WIRING DIAGRAM (POSITIVE EARTH)  
FOR 1952-4 MODEL 100 PANTHERS

(Joseph Lucas, Ltd.)

The sleeving colours are shown in the diagram. On the 1955-66 models the pilot bulb is internally located (at the rear of the reflector) and a double-filament stop-tail lamp is provided instead of the tail lamp shown.



**FIG. 38. WIRING DIAGRAM (POSITIVE EARTH) FOR 1955-63 MODEL 100 AND 1959-66 MODEL 120 PANTHERS**

*(Joseph Lucas, Ltd.)*

**KEY TO SLEEVING COLOURS**

- |                  |                   |
|------------------|-------------------|
| <b>B.</b> Black. | <b>R.</b> Red.    |
| <b>G.</b> Green. | <b>U.</b> Blue.   |
| <b>N.</b> Brown. | <b>W.</b> White.  |
|                  | <b>Y.</b> Yellow. |